



# LASALLE



largest worldwide network of education  
[www.lasalle.org](http://www.lasalle.org)

# 4

CAMPUSES

# 3 800

STUDENTS

# 20 000

ALUMNI

## THEY EMPLOY OUR GRADUATES

DANONE · FERRERO · NESTLÉ ·  
L'ORÉAL · CARREFOUR  
· CRÉDIT AGRICOLE  
LACTALIS · LIMAGRAIN · UNILEVER  
VEOLIA · BONDUELLE · CARGILL  
MOËT-HENNESSY · ONU  
· FAO · NGOS...

AND MANY OTHERS

A multicultural and multi-language campus with more than 30 nationalities (Zimbabwe, Mexico, China, USA, Lebanon, India...)

## TESTIMONIALS



### UROS RAKIC, I-SAFE 2ND YEAR STUDENT

«This programme is thought in English. In the global environment we slowly approach it is a necessity. Secondly, one is not spending a full year in the classroom : study trips are a regular part of the course in the first two years. I am positively surprised by an innovative approach to class organisation and homework assignments. We are regularly expected to present our projects in front of the class. Approachable and flexible professors also play a significant role once the feedback is necessary!».



### JANA KHALIL, I-SAFE 2ND YEAR STUDENT

«The i-SAFE program offers a real opening to the international. In the globalized world in which we live, it is more than important to develop these perspectives and to work together to solve the major issues we all face. More than just a program, i-SAFE offers open-mindedness, values of sharing and above all curiosity towards the cultures and ways of thinking of all. This program is thus more than attractive for this opening. It is extremely interesting to master fields such as agriculture, agronomy, sustainable development and even entrepreneurship on a French scale. However, it is an undeniable bonus to add international know-how, and techniques developed in the four corners of the world in order to have all the cards in hand to think about effective solutions».

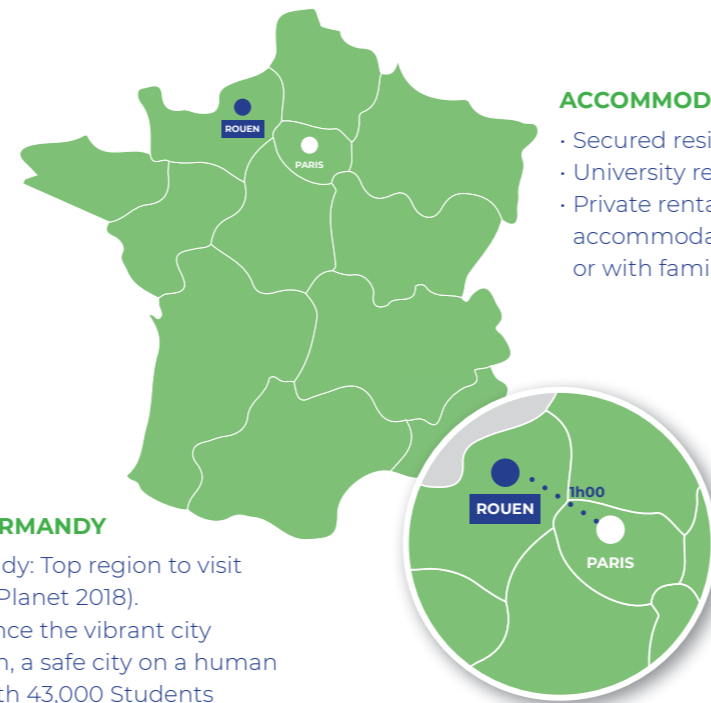


### LUCAS ROBERT, I-SAFE 2ND YEAR STUDENT

« I heard about the UniLasalle network which is very well known in France. The history, the diversity of training courses and the professional relations of the school make its strength and its recognition. i-SAFE is a new training that, for me, formally meets the current needs in the field of engineering: diversity of cultures, experiences and knowledge».

## CHOOSE FRANCE

Discover the French "way of life" and gastronomy. Learn French, the world's most commonly spoken language by 2050



### TRY NORMANDY

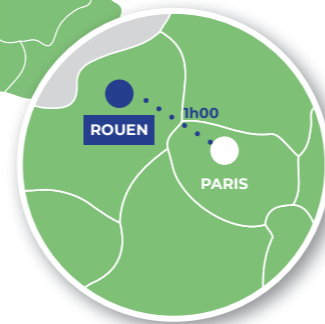
Normandy: Top region to visit (Lonely Planet 2018). Experience the vibrant city of Rouen, a safe city on a human scale with 43,000 Students and 5,000 International Students

### STUDENT LIFE

- Social event organized by the student and the International Department (Gala, Team building day, touristic stay)
- Several student organizations on the campus (International club)

### ACCOMMODATION

- Secured residences
- University residences
- Private rental accommodations or with families



### HEALTH & WELL-BEING

- Benefit from the excellent and free French healthcare system
- On campus psychological support team
- Disability friendly campus and personalized support
- University hospital within 15'

## CONTACTS

**Rouen campus**  
3 rue du Tronquet - CS 40118  
76130 Mont-Saint-Aignan

INTERNATIONAL  
Anthony Voisine  
Student Recruitment Officer  
+ 33 (0)2 32 82 91 29 / +33 (0)7 61 00 75 44  
anthony.voisine@unilasalle.fr

FRANCE  
Céline Jacquemoire  
Admissions officer  
+ 33 (0)2 32 82 91 47  
admissions.rouen@unilasalle.fr

### OPEN DAYS

December 5, 2020  
February 6, 2021  
March, 6 2021

Set up a one on one online meeting !

## Admission

Criteria: Secondary school diploma French Baccalaureate or equivalent.  
Strong academic prerequisite background (specialisation in mathematics, physics or biology). Proficiency in English; equivalent B2; TOEIC IBT 600, TOEFL IBT 80, IELTS 6.0, Cambridge FCE. Students who have completed their previous education in english are exempted from this requirement.

For an admission in 2nd or 3rd year: we require a bachelor year 2 or year 3

## Application

### 1st year :

• French and EU candidates may apply on [www.parcoursup.fr](http://www.parcoursup.fr) from late january to mid march (online application followed by an interview)

• Candidates from outside EU may apply on [www.unilasalle.fr](http://www.unilasalle.fr) from november to may (application fees are free until 31<sup>st</sup> january)

### 2nd and 3rd years :

• Online application on [www.unilasalle.fr](http://www.unilasalle.fr) followed by an interview  
• 3 sessions : mid january / end of march / start of june

## Tuition fees for 2019/2020

• EU students: 7600€/year  
• Non EU students: 9950€/year  
Scholarships available from 5 % to 75 % (merit and need-based)  
NOTE: Student study trips and double degree possibilities are included in the tuition fees.  
Average cost of living in Rouen: 650€/month

# UniLasalle

Earth & Sciences

2021 - 2022

## Bachelor + Master

## International Sustainable

## Agribusiness & Food

## Engineering

# i-SAFE

Follow your studies in France  
**100%**  
in ENGLISH

«Become an international expert based on french know-how»

Engineering a Bright Future

UniLasalle  
Earth & Sciences



[www.unilasalle.fr](http://www.unilasalle.fr)  
[www.international.unilasalle.fr](http://www.international.unilasalle.fr)



Cti  
Ingénieur en Agronomie et Agro-industries

Normandy campus - Rouen, France  
1 hour from Paris

## DEAN'S WELCOME WORDS



Marie LUMMERZHEIM  
Dean of UniLaSalle Rouen

By joining the International Sustainable AgriBusiness and Food-Engineering undergraduate Master's programme (i-SAFE) you will acquire key competencies and business experiences to deal with agriculture, food and environment and become the green business professional, that is needed now and in the future. Besides, i-SAFE guarantees you a 3D international experience with your classmates, in the course programme and through extensive learning and training abroad. On campus, you will join a vibrant student community where there are new and lasting friendships to be made. Rouen, a friendly city in the heart of Europe, and at the doorstep of many fascinating regions and countries, easy to explore. Be sure that the entire educational community of UniLaSalle is mobilized to make the i-SAFE programme a turning point in your life.

See you next september!



## STRENGTHS OF THE PROGRAMME

- 01 1<sup>st</sup> engineering programme in life sciences in France taught in english
- 02 A know-how about the agricultural, food and environmental questions with a focus on innovation and entrepreneurship
- 03 International track : go abroad up to 24 months
- 04 4 languages taught with certifications : English, Spanish, German, Portuguese
- 05 228 partner universities in 82 countries

## SKILLS

- 01 Scientific & technical knowledge acquisition and mastery of their implementation
- 02 The adaptation to the specific requirements of the company and society
- 03 Taking into account the organisational, personal and cultural dimension
- 04 Ability to think globally while acting locally. Take into account the issues of sustainable development



## COURSE STRUCTURE



### Pure and applied sciences for sustainability

Study of living systems	Entrepreneurship & innovation
Climate and Earth envelope / Cell biology / Biodiversity systematic / Soil sciences / Genetics / Physiology on living organisms / Animal systematic / Micro-organisms / Immunology / Physiology of living organism / Agronomy / Applied animal physiology / Ecosystem: how does it work? / Microbiology : mycology & virology / Molecular biology / Animal feeding / Applied animal physiology / Physics / Biomolecules	Methodology of work in engineering school / Introduction to farming systems / Duo day / Sustainable development project study / Sustainable engineer / International farming systems / Marketing approach french food / Law and political sciences / Personal project / Company : organization and operations / Environment, operations, farm analysis
Food systems & quality	Information systems & digital transformation
Chemical kinetics / Thermochemistry / Metabolic biochemistry and enzymology / Fluid mechanics / Physical thermodynamics / Atomic & chemistry bounds / Organic chemistry / Physics	Logic / Integral calculus and differential equations / One variable functions and limited development / Descriptive statistics / Engineer tools / Database - SQL / Linear algebra / Inferential statistics / Statistical test practices / Descriptive statistics / Probability / Functions of several variables and optimization / Algorithm and programming
International trade & business administration	
Geopolitics / Business operation / General economy / Political sciences and governance / Accounting / Account management / Agricultural policy / Rural sociology / International agriculture / Circular economy	
Social skills and self-building	
Innovate - Engage - Serve / Professional project / Personal development tools / Cross-cultural studies / Interculturality / Ethics & social responsibility / Languages (German, Spanish, Portuguese, English) / Sport / Weekly seminar	



### Professional skills

Majors		
Prevention and health benefit	Ag. & food data management	Urban ag. & green cities
Food quality R&D	Agronomy	Agro-ecology, soil, water & land management
Marketing & sales	Livestock management	International trade
Consulting & business administration	Food processes	Entrepreneurship & innovation
Tropical ag. & food	Plant breeding (Erasmus mundus)	Agrologistics
Sustainable management	Circular economy	French food & Agribusiness
International Agriculture & Food Production	Sustainable Agro-resources	Adaptative farming systems, land management & biodiversities

6-week internship In farm or food industry	1 week STUDY TRIP each semester (year 1&2) Discover Normandy, Parma, Barcelona and Brussels (Included in tuition fees)	Mandatory semester abroad No extra tuition fees. Go to one of our 228 partners all around the world	6-week experience Internship or individual project	16-week internship R&D in a company/ university or on your start-up project	Mandatory semester abroad POSSIBILITY OF DOUBLE DEGREE No extra tuition fees.	24-week internship Pre-professional experience in a company or on your startup project
---	---	--	---	--	---	---

60 ECTS/year



## Student study trips

Discover Normandy, Brussels, Barcelona and Parma

- **BRUSSELS**, discovering the European Union institutions
- **PARMA**, from fields/farms to plates
- **BARCELONA**, markets and imports
- **NORMANDY**, in construction, built in collaboration with students

## Weekly seminars

Be curious be aware !  
Invited international speaker from research and private sector, chosen by students

## Double degree

24 double degrees with prestigious partner universities in France or abroad  
For example :

- Cranfield University, England
- Swedish University of Agricultural Sciences, Sweden
- University of Laval, Canada
- Wageningen UR, Netherlands

## Innovative pedagogy

- Small classes
- Learning by doing
- Learning by searching

## Technology for sustainability

UniLaSalle is the cutting edge of technology, with its research platforms :

- AgriLab incubator
- Experimental farm
- Culinary lab
- Greenhouses
- Agro R Tech